

CamTu

Price List



EYE LASH EXTENSIONS

Natural

40-50 Lashes per eye
(1 hr)

Full Set \$100
2 week fill \$50
3 week fill \$60

Classy

70-90 Lashes per eye
(1.5 hrs)

Full Set \$120
2 week fill \$60
3 week fill \$70

Glam

100-120 Lashes per eye
(2 hrs)

Full Set \$150
2 week fill \$80
3 week fill \$90

Remove Eye Lashes \$35 (20-30 mins)

Info@CamTuBeauty.com

CamTu

PriceList



EYE LASH EXTENSIONS

Eyelash extensions last up to 2 months with proper maintenance

No operations; no pain

Safe in showers and swimming pools

No need for mascara or eyelash curler

Eyelashes will appear longer, fuller and darker

Lashes come in various lengths, thicknesses and colors

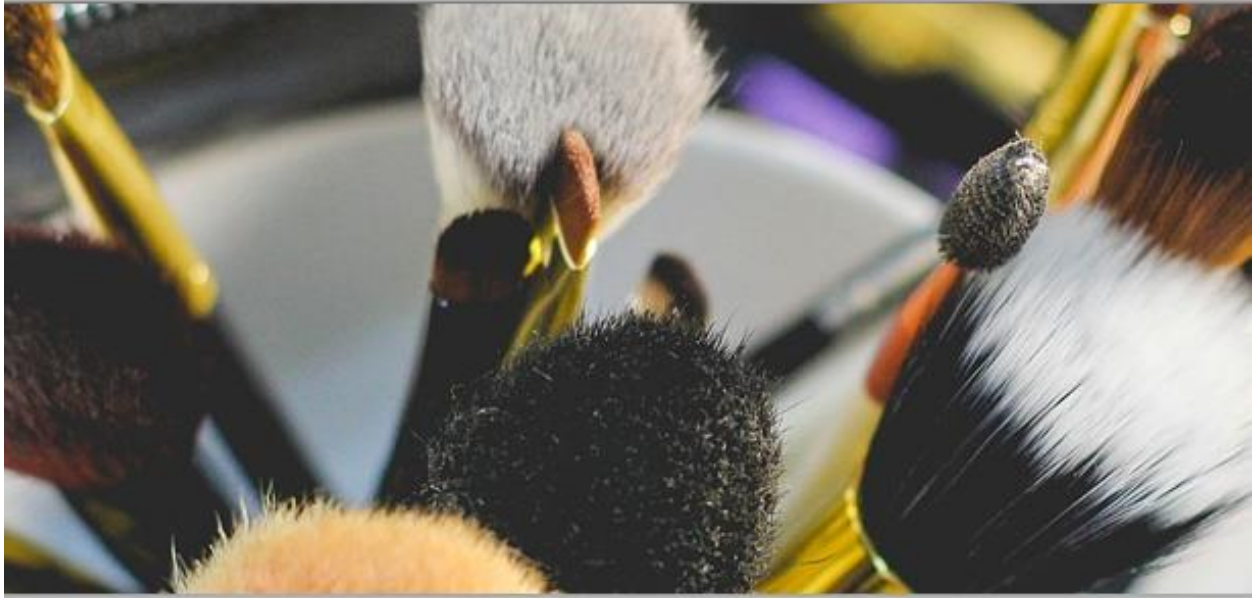
*When properly applied, eyelash extensions will not feel any different.
Lashes will look realistically full, yet individually separated with no clumps.*

*The initial procedure will take between 2 - 2.5 hours,
with touchups taking between .5 - 1.5 hours, depending on wear.*

Info@CamTuBeauty.com

CamTu

PriceList



MAKEUP

LESSONS

Private Makeup Lesson (15 hrs) - \$150

Group Makeup Lesson; 5-10 people max (2.5 hrs) - \$100pp

BRIDAL TRIALS

In Studio Makeup Trial (1.5 hrs) - \$110pp

False Lashes - \$10pp

Mink - \$20pp

WEDDING DAY

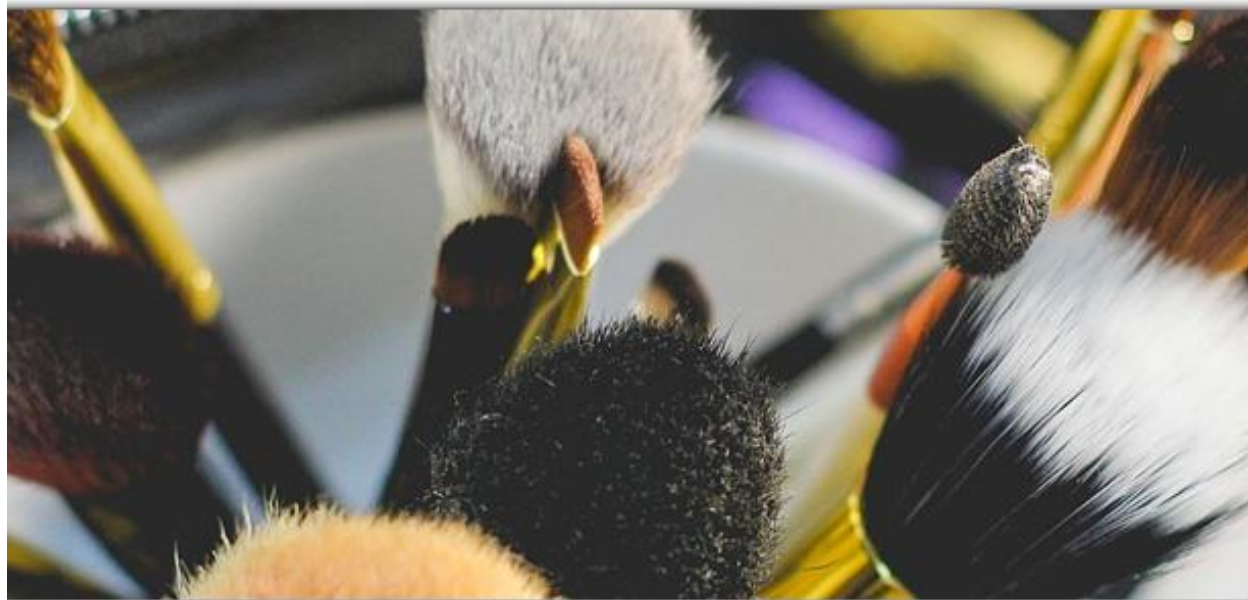
Bride Only Including Stripe Lashes - \$250.00

Bridal Party (group of 5 or more) - \$100pp

Info@CamTuBeauty.com

CamTu

PriceList



MAKEUP

Airbrush Makeup - \$115pp

Hand Applied Makeup - \$100pp

Beauty Strip False Lashes - \$10pp

Beauty Individual Mink Lashes - \$20pp

Creative Makeup - Price upon Request

Young Ladies (6- 12 years) - \$50pp

Children (2- 5 years) - Complimentary

Camouflage Makeup - \$100 per hour or part thereof

Henna - \$15 and up

Info@CamTuBeauty.com

CamTu

PriceList



MICROBLADING

Microblading w/ 1 Touch Up Included - \$400

Touchup After 1 Year (and if done on yearly basis) - \$150

Touchup After 2 Years - \$250

Touchup After 3 Years (or longer) - \$350

Info@CamTuBeauty.com

CamTu

PriceList



NAIL ART SERVICES

Full Set Gel - \$45

Fill-In Gel - \$40

Dipping Powder - \$50

Gel Manacure - \$40

Powder Color - \$50

Ombre Color - \$55

Finger Fancy Diamond - \$10 each / Regular Diamond \$5 and up

Info@CamTuBeauty.com

CamTu

PriceList



TRAVEL & PARKING

Travel is charged for all services at a rate of \$50 for 0-20 miles from the Silver Spring, MD area; \$1 per mile thereafter

PARKING

Hotel valet parking or car parking fees are payable by the client for artists if free parking is not available

SURCHARGES

Surcharges will apply for early starts (prior to 5:30am) and also on public holidays

13205 Kara Lane Silver Spring, MD

Info@CamTuBeauty.com